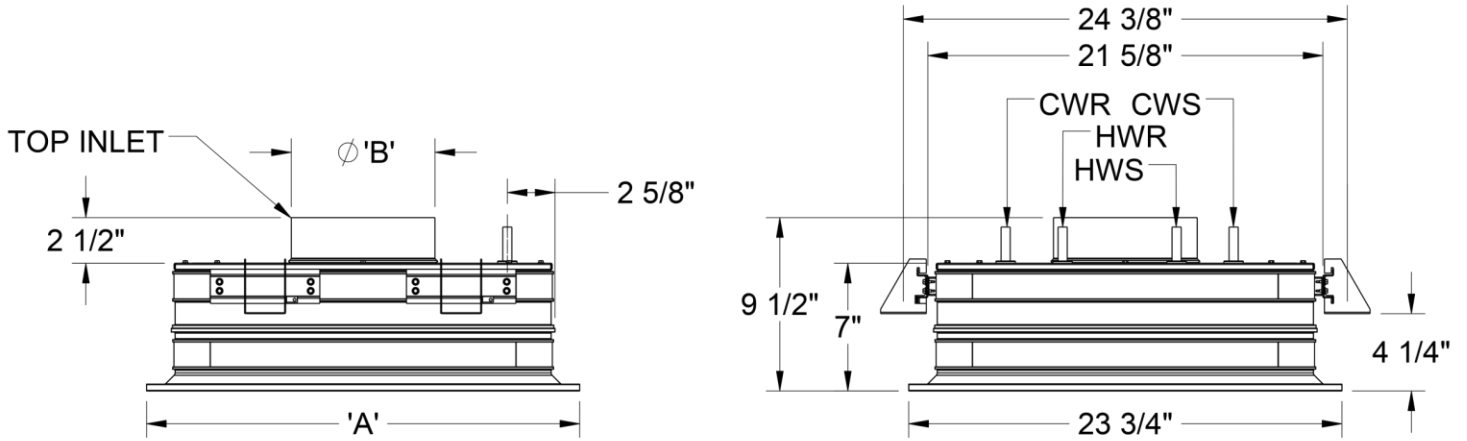


## CBAM • Active Modular Chilled Beam • 4-Way Discharge • Horizontal Coil

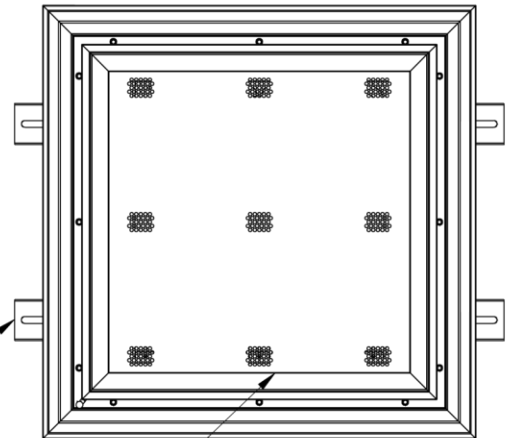
### Top Inlet Configurations



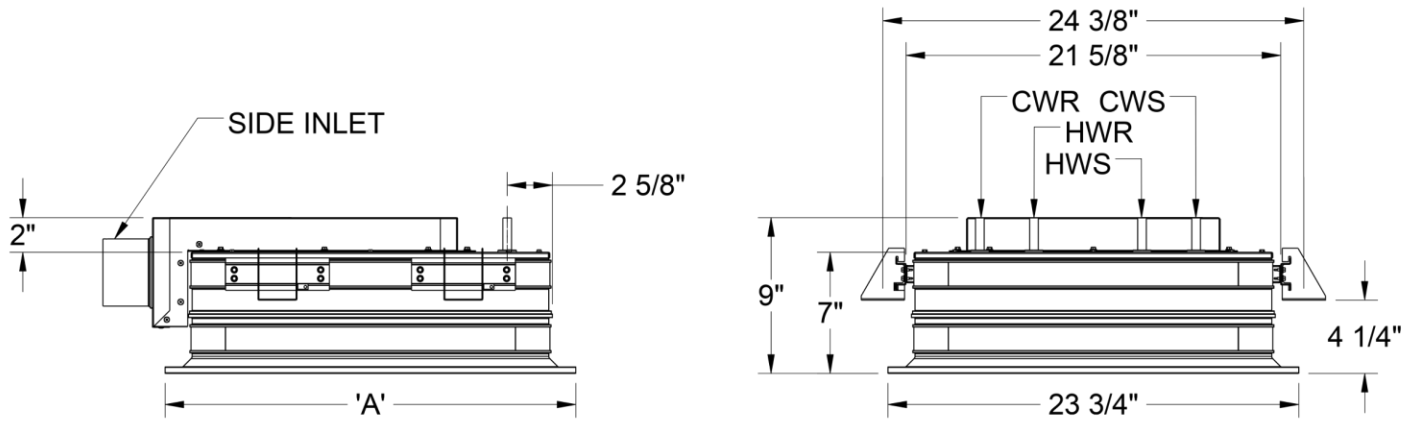
MODULE SIZE (IN)	'A' DIMENSION	NOMINAL INLET DIA. (IN)	'B' DIMENSION (IN)
24 X 24	23 3/4"	5	4 7/8
24 X 48	47 3/4"	6	5 7/8
		8	7 7/8

ADJUSTABLE MOUNTING BRACKET

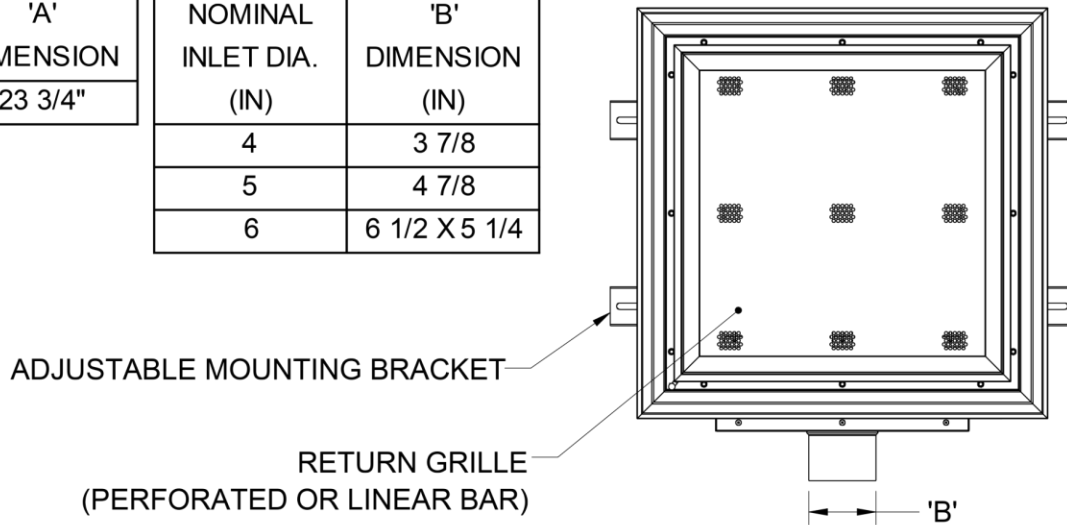
RETURN GRILLE  
(PERFORATED OR LINEAR BAR)



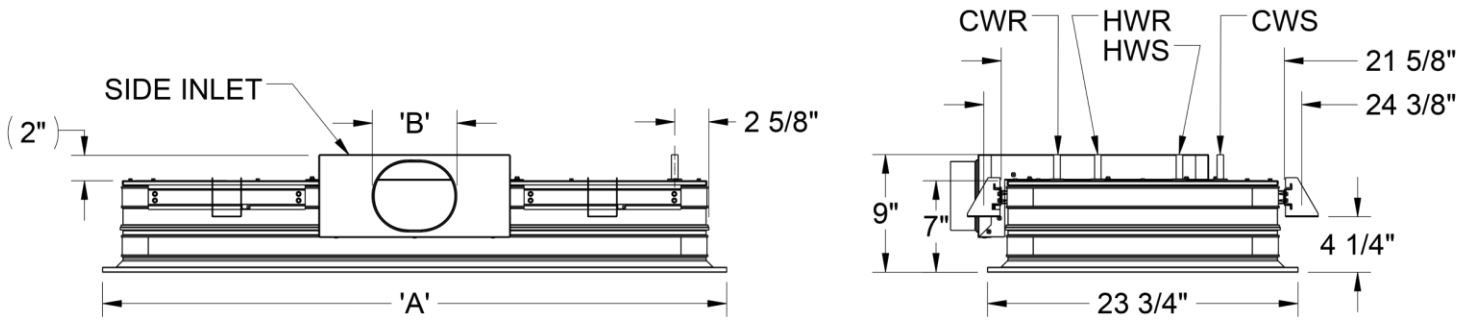
### 24" x 24" Side Inlet Configurations



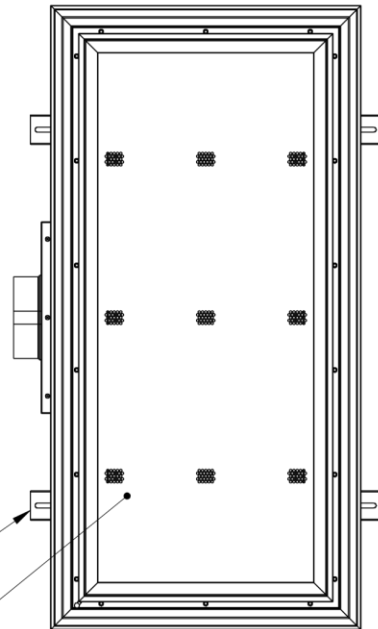
MODULE SIZE (IN)	'A' DIMENSION	NOMINAL INLET DIA. (IN)	'B' DIMENSION (IN)
24 X 24	23 3/4"	4	3 7/8
		5	4 7/8
		6	6 1/2 X 5 1/4



### 48" x 24" Side Inlet Configurations



MODULE SIZE (IN)	'A' DIMENSION	NOMINAL INLET DIA. (IN)	'B' DIMENSION (IN)
24 X 48	47 3/4"	4	3 7/8
		5	4 7/8
		6	6 1/2 X 5 1/4



ADJUSTABLE MOUNTING BRACKET

RETURN GRILLE  
(PERFORATED OR LINEAR BAR)

## General Description

- 24 inch wide, linear active chilled beam diffuser, available with 4-way air distribution.
- Designed to fit into standard 24 inch ceiling grids, available with different borders.
- 2 feet and 4 feet lengths.
- 2 pipe or 4 pipe coil configurations.
- Casing manufactured with extruded aluminum and galvanealed G90, 20 gauge sheet metal. Mechanically sealed, leak resistant construction.
- Coil with air vent and 1/2" water connection, available with sweat or threaded connection.
- Rails with adjustable mounting brackets are provided in 4 locations for mounting.
- 4, 5, 6 or 8 inch round inlets and 6 or 8 inch oval connections, located either on top of the unit.
- Return face panel assembly is secured with "hidden" 1/4 - turn allowing for removal and providing easy access to internal components.
- Return face panel assembly available with round perforation or linear bar grille.
- Exterior face, border elements and visible internal components are painted in color of choice. Paint is powder coat, a mix of polyester and epoxy.

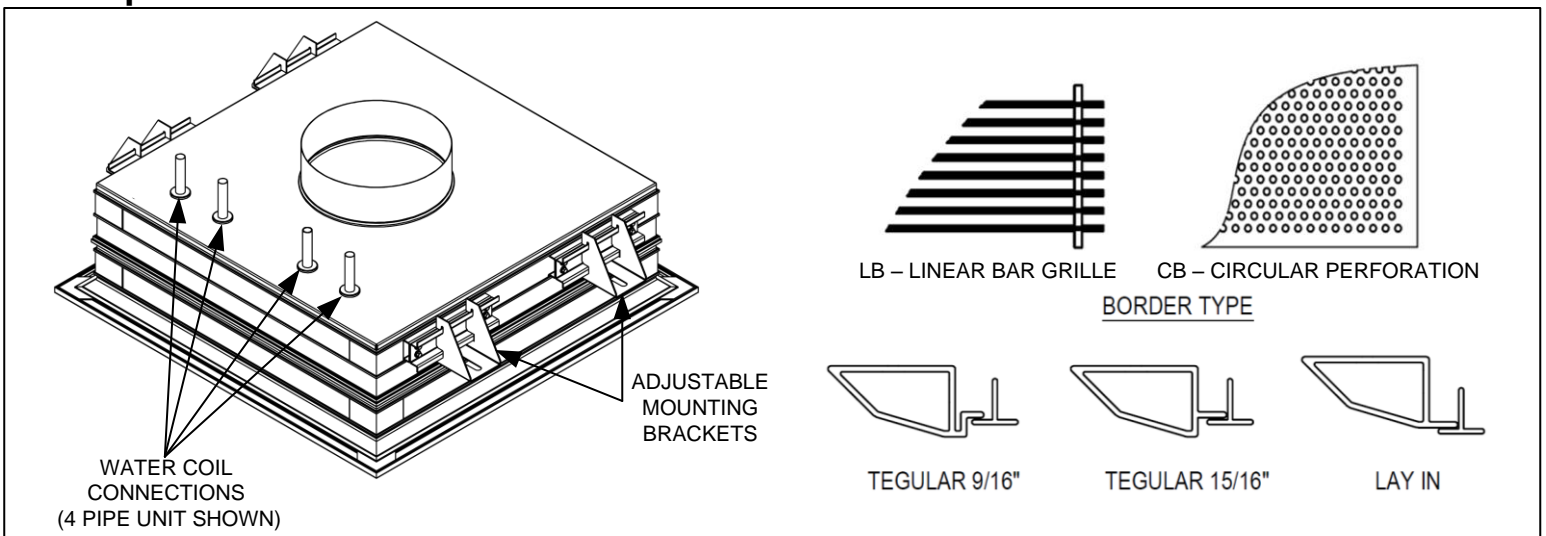
## Basic Unit Configuration

<b>Module Size &amp; Inlet Location</b> <input type="checkbox"/> 24" x 24" Top Inlet <input type="checkbox"/> 24" x 24" Side Inlet <input type="checkbox"/> 48" x 24" Top Inlet <input type="checkbox"/> 48" x 24" Right Hand Side Inlet <input type="checkbox"/> 48" x 24" Left Hand Side Inlet	<b>Nozzle Configuration</b> <input type="checkbox"/> B1 <input type="checkbox"/> B2 <input type="checkbox"/> B3 <input type="checkbox"/> B4	<b>Primary Air Inlet Diameter Connection (inch)</b> <input type="checkbox"/> 4 <sup>1</sup> <input type="checkbox"/> 5 <input type="checkbox"/> 6 <sup>2</sup> <input type="checkbox"/> 8 <sup>3</sup>	<b>Coil Type - Water Side Connection</b> <input type="checkbox"/> 2 Pipe <input type="checkbox"/> 4 Pipe
<b>Coil Connection -Type</b> <input type="checkbox"/> 1/2 in Sweat <input type="checkbox"/> 1/2 in MNPT <b>Flexible Connections</b> <input type="checkbox"/> 12" Stainless Steel Flex Hose Connection <input type="checkbox"/> 18" Stainless Steel Flex Hose Connection <input type="checkbox"/> 24" Stainless Steel Flex Hose Connection	<b>Face Pattern</b> <input type="checkbox"/> Circular Perforation <input type="checkbox"/> Linear Bar Grille	<b>Unit Options</b> <input type="checkbox"/> 1/2 in EcoShield <input type="checkbox"/> External Plenum Insulation	<b>Border Type</b> <input type="checkbox"/> Lay In <input type="checkbox"/> Tegular 9/16" (NT) <input type="checkbox"/> Tegular 15/16" (DF)
		<b>Exposed Face Finish Color</b> <input type="checkbox"/> White #26 <input type="checkbox"/> Black #84	

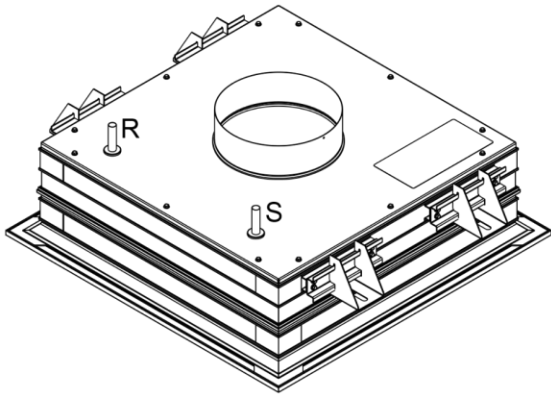
**Notes:**

- 1) 4 inch inlet only available on side inlet configurations
- 2) 6 inch inlet is equivalent oval on side inlet configurations
- 3) 8 inch inlet only available on top inlet configurations

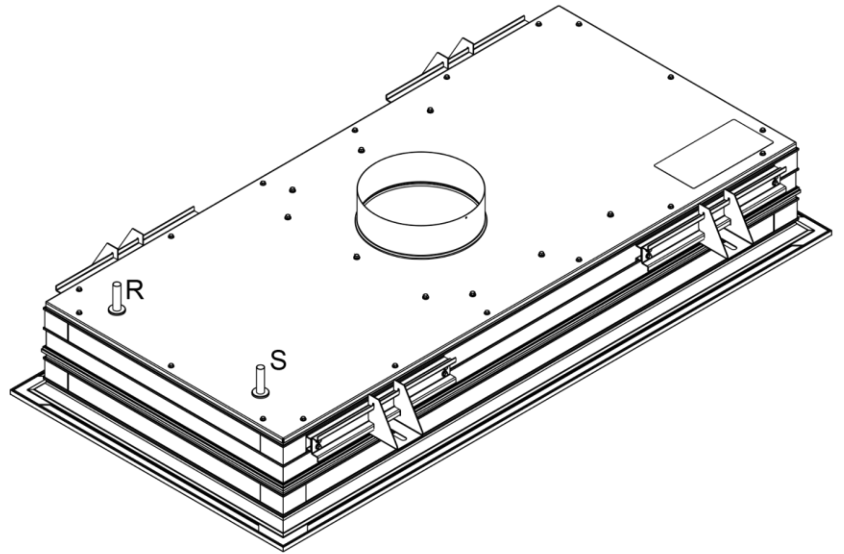
## Unit Option Details



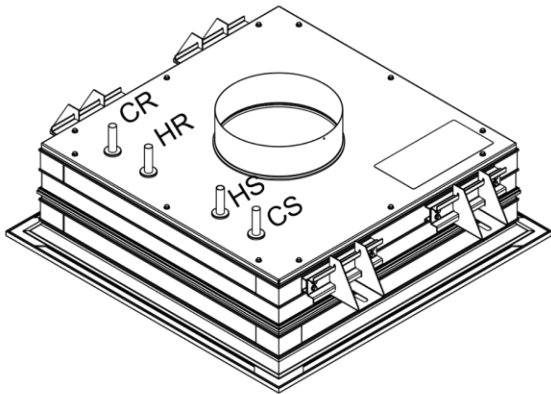
## Top Inlet Configuration Coil Connection Details



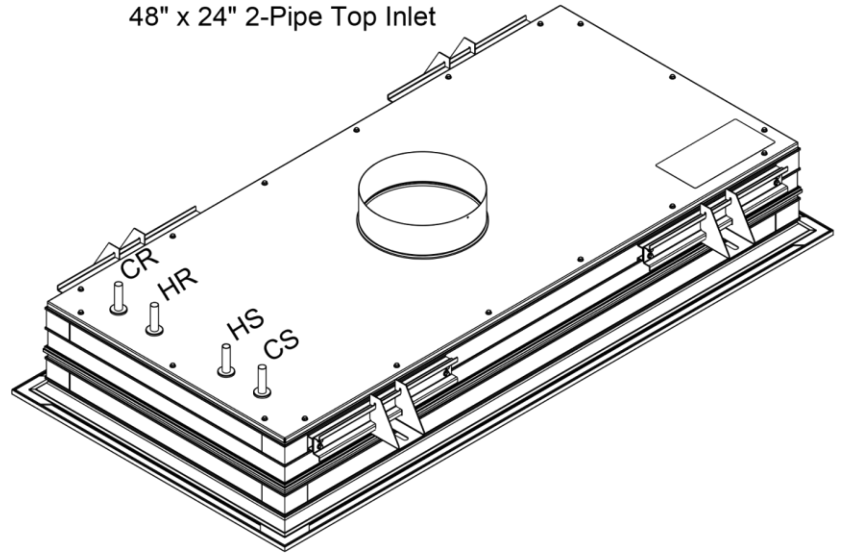
24" x 24" 2-Pipe Top Inlet



48" x 24" 2-Pipe Top Inlet



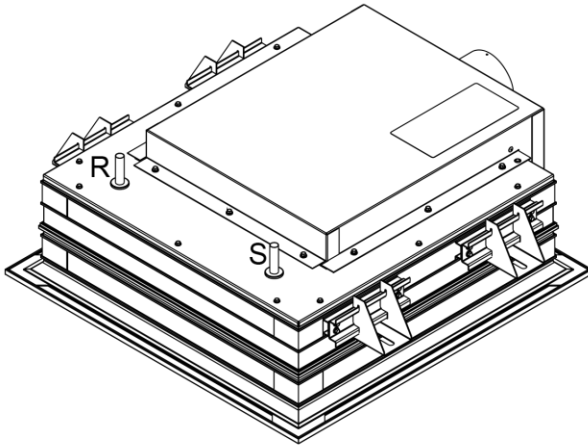
24" x 24" 4-Pipe Top Inlet



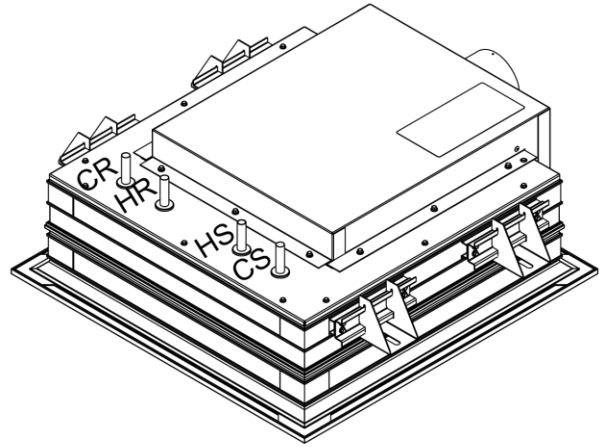
48" x 24" 4-Pipe Top Inlet

R – Return	S – Supply
CR – Cooling Return	CS – Cooling Supply
HR – Heating Return	HS – Heating Supply

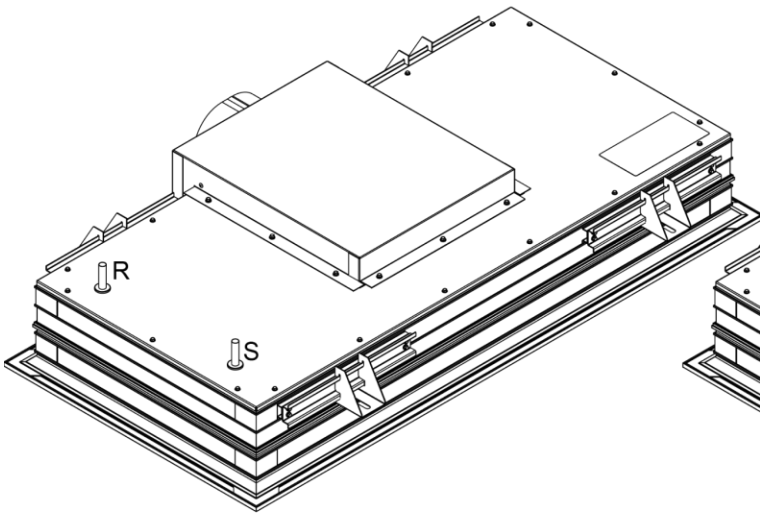
# Side Inlet Configuration Coil Connection & Handing



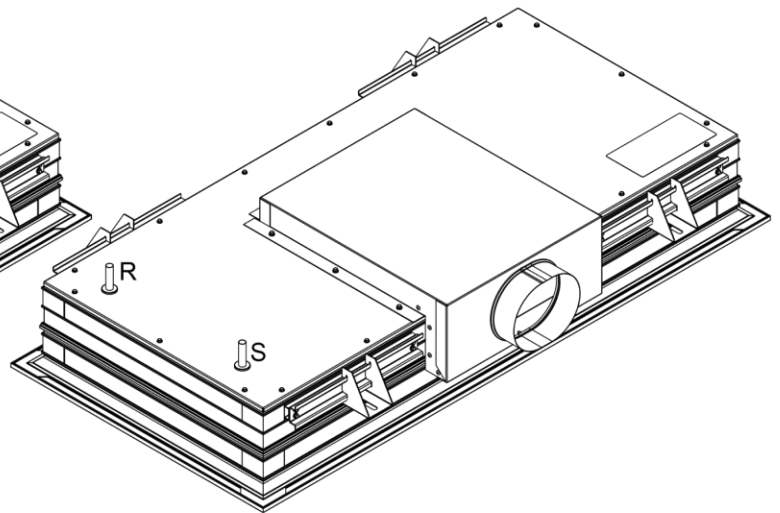
24" x 24" 2-Pipe Side Inlet



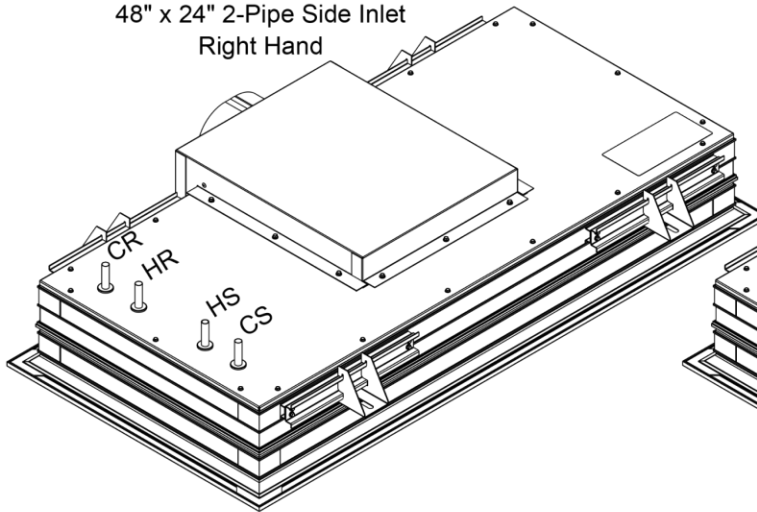
24" x 24" 4-Pipe Side Inlet



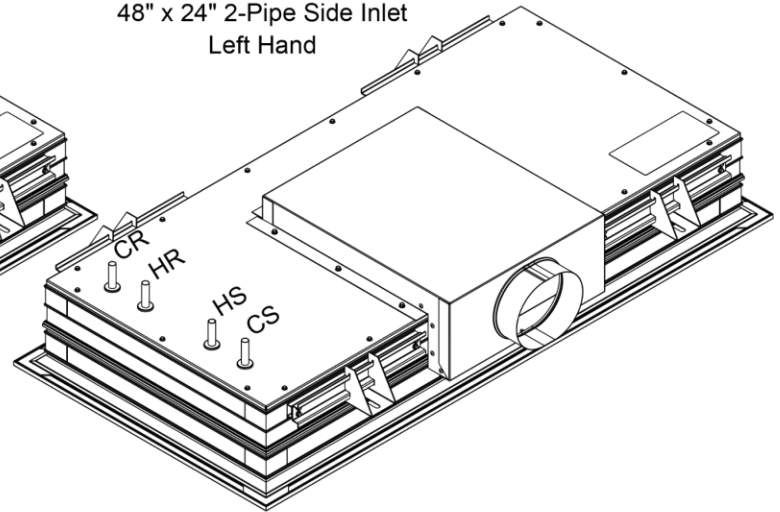
48" x 24" 2-Pipe Side Inlet  
Right Hand



48" x 24" 2-Pipe Side Inlet  
Left Hand



48" x 24" 4-Pipe Side Inlet  
Right Hand



48" x 24" 4-Pipe Side Inlet  
Left Hand

Note: Hand of unit is determined when facing inlet location and by location of coil connections.

R – Return  
CR – Cooling Return  
HR – Heating Return

S – Supply  
CS – Cooling Supply  
HS – Heating Supply

This Submittal is meant to demonstrate general dimensions and information of this product. The drawings are not meant to detail every aspect of the product. Drawings are not to scale. Titus reserves the right to make changes without written notice.

All rights reserved. No part of this work may be reproduced or transmitted in any form or by any means, electronic or mechanical, including photocopying and recording, or by any information storage retrieval system without permission in writing from Air Distribution Technologies, Inc.